

Madrid, 19 July 2023

**OTHER RELEVANT INFORMATION  
LLEIDANETWORKS SERVEIS TELEMÀTICS S.A.**

**2Q 2023 Production Report and Comparative Analysis**

Under the provisions of Article 17 of Regulation (EU) No 596/2014 regarding market abuse and Article 228 of the modified text of the Spanish Stock Market Act, approved by Spanish Royal Legislative Decree 6/2023 of 17 October and related provisions, as well as Circular 3/2020 of BME MTF Equity on information to be provided by Growing Companies, we are hereby informing you of the following information relating to LLEIDANETWORKS SERVEIS TELEMÀTICS, S.A. (hereinafter “Lleida.net”, or the “Company” or the “Enterprise”) brings to your attention the following information that has been prepared under the exclusive responsibility of the issuer and its administrators:

Attached is a presentation on the production preview to be held during the webinar at 10 a.m. on 20 July 2023. Data on production are for Q2 2023 compared to the same quarters of the previous three years, and monthly comparisons and follow-ups for the last four years regarding unique users and contracting circuits.

The webinar will be held on Wednesday, 20 July, with the company’s CEO, Sisco Sapena, answering questions from the audience at <https://www.lleida.net/es/streaming/2T2023>. Pre-registration is required to attend the webinar.

We are available for any clarifications needed.

Regards,

Francisco Sapena Soler, CEO  
Madrid, 19 July 2023.



# **TRADING UPDATE**

2ND QUARTER 2023 AND  
COMPARISON WITH PREVIOUS  
QUARTERS

# ANÁLISIS

- Active Click & Sign Standard Circuits Jun 2019 - Jun 2023
- Click & Sign Standard contracts generated 2nd Quarter 2019-2023
- Click & Sign Pro quarterly production
- Unique Registered Email Users Jun 2019-2023
- Monthly Registered Email production 12 months
- Registered Sms Production 2nd Quarter 2020-2023
- Lleidanet PKI, Timestamp Production

# **GROWTH, MILESTONES AND THANKS TO OUR STAKEHOLDERS**

The production data for the second quarter of 2023 show a sustained growth in the use of our patented technology, once again.

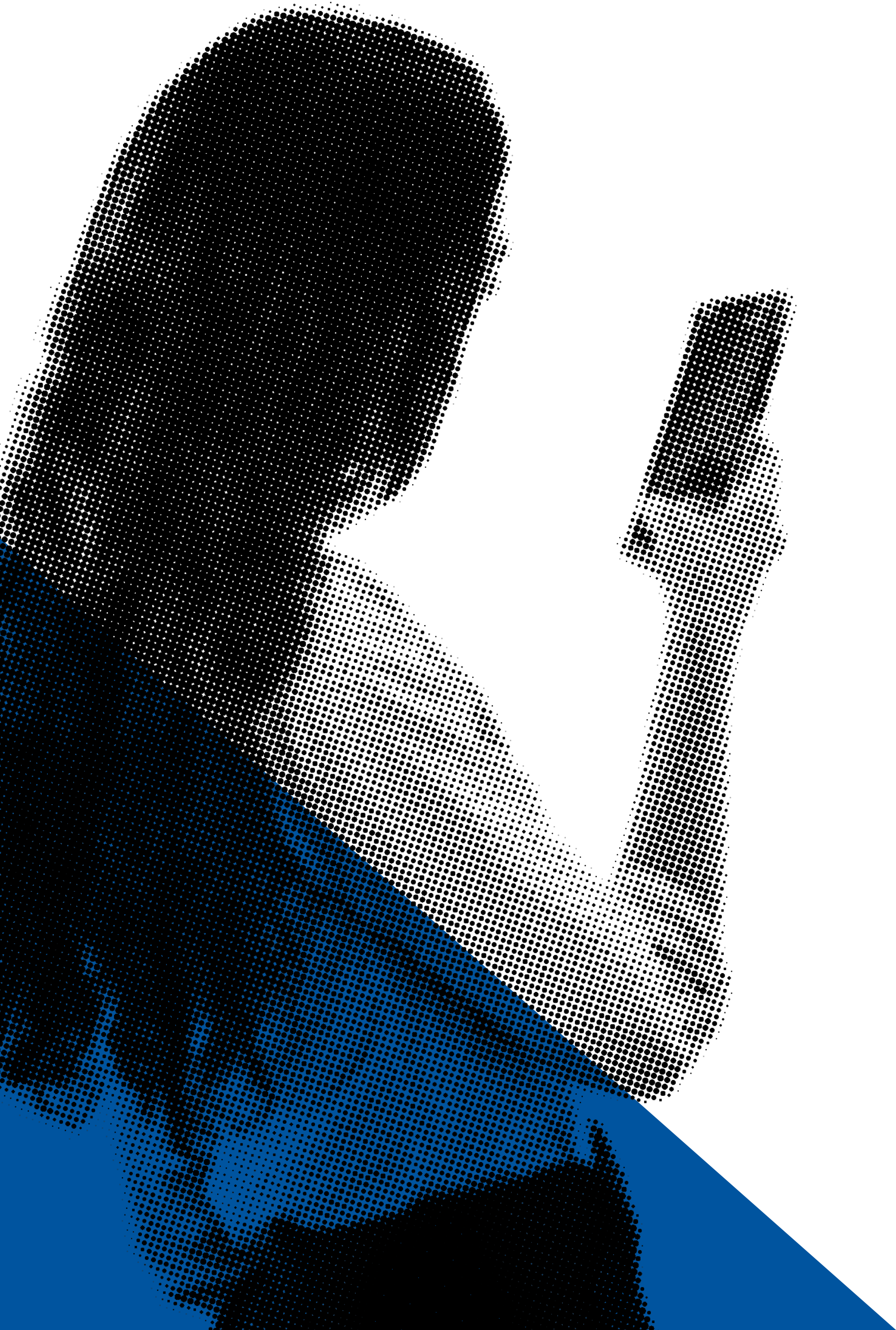
Both Click&Sign active circuits and SMS circuits as well as Lleida.net PKI (formerly Indenova) timestamps have increased both in number of unique users and number of deliveries.

The line that has been occasionally affected is the production of registered e-mail, as a result of the cut-off of the service due to non-payment to 4-72, the Colombian postal company.

In the last six months, we have celebrated two important milestones: the production of our 100 millionth registered email and the achievement of our 300th patent.

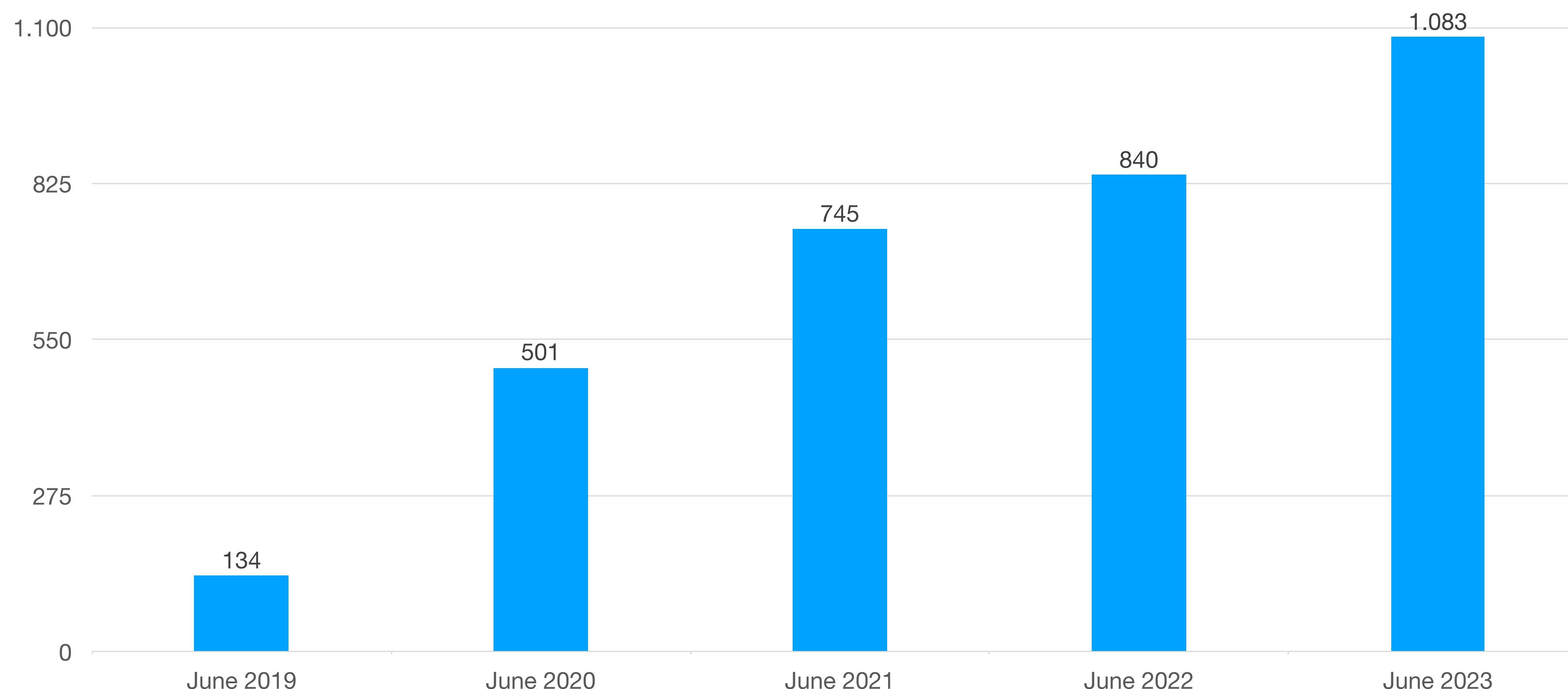
We continue to work to reinforce our leading position in the European market, and to support the shareholders who have been with us since our IPO in 2015.





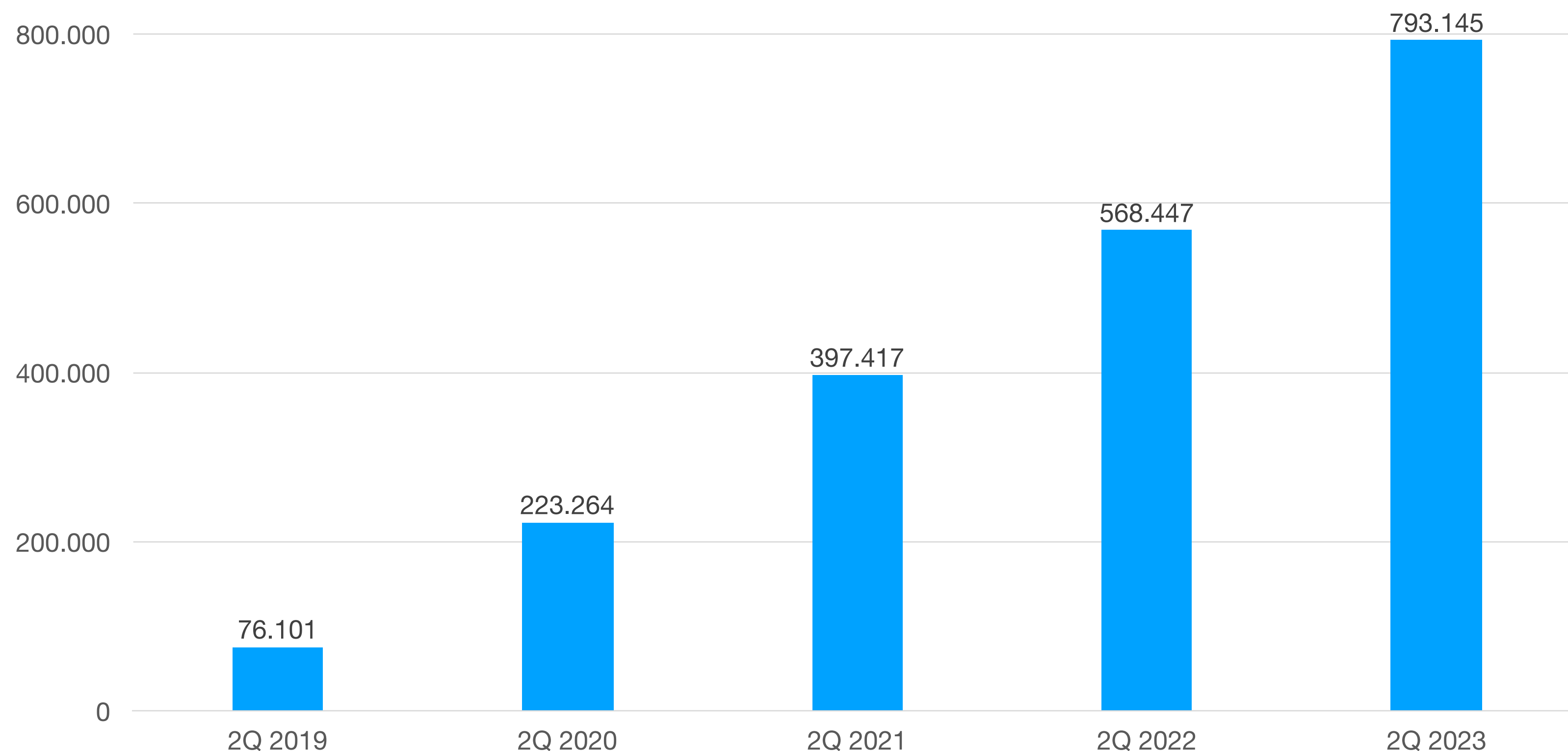
# CLICK&SIGN

# ACTIVE CIRCUITS CLICK&SIGN STANDARD



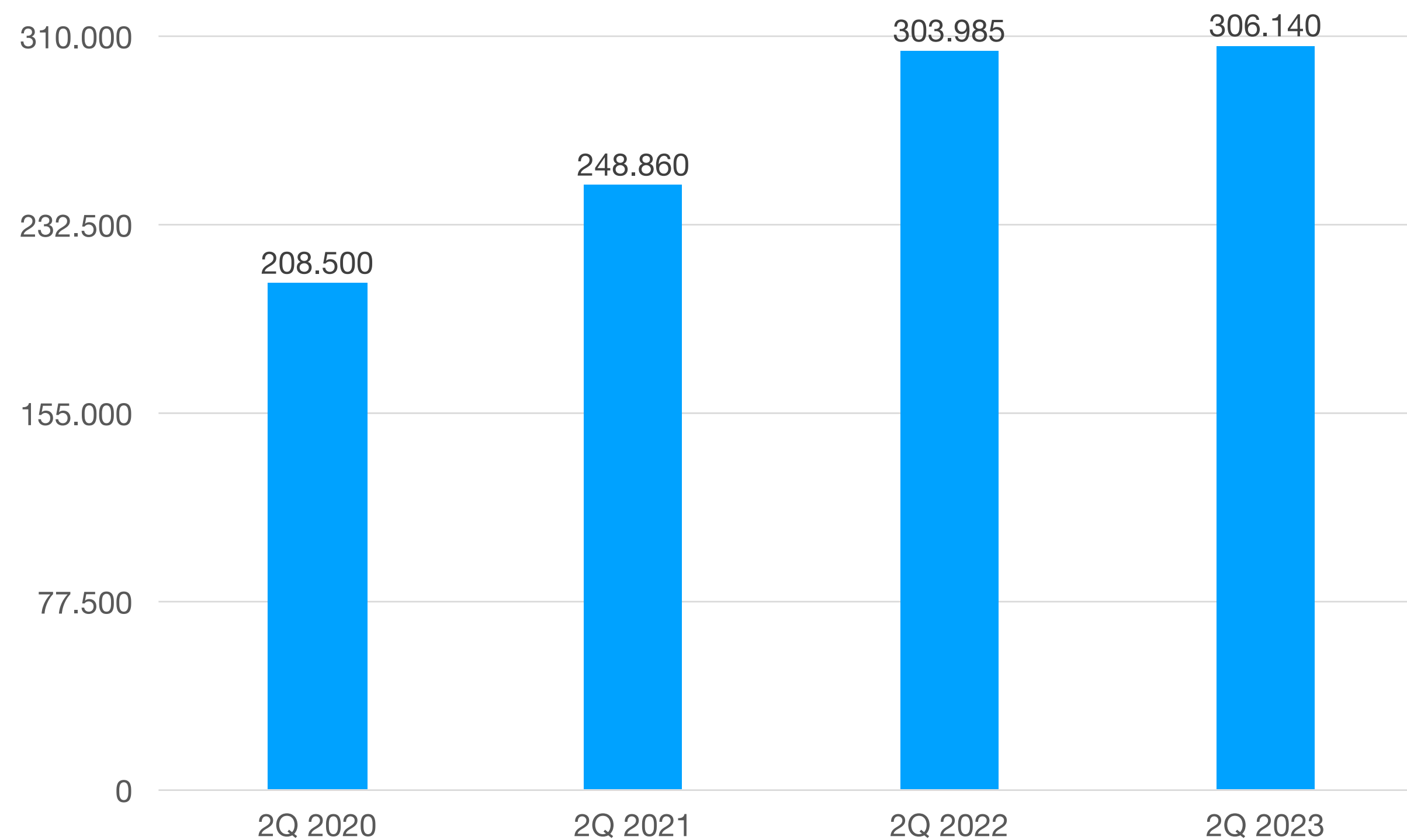
The active circuits of contract signings by API generated continue to show an upward trend with an increase of 28.92% in June 2023 compared to June 2022. The traffic comes mainly from telecoms contracts, as well as real estate loans in Europe, with prepaid card contracts in Spain and consumer finance in Latin America rising. New features such as electronic signature drive the number of circuits in operation.

# CLICK&SIGN STANDARD 2Q AND COMPARATIVE CONTRACTS



The number of contracts finalised by API continued to increase, with a 39.70% rise in the second quarter of 2023 compared to the second quarter of 2022. Most of the traffic came from telecoms contracts, as well as real estate loans in Europe and an increase in the opening of bank accounts and consumer finance in Latin America.

## QUARTERLY PRODUCTION CLICK&SIGN PRO



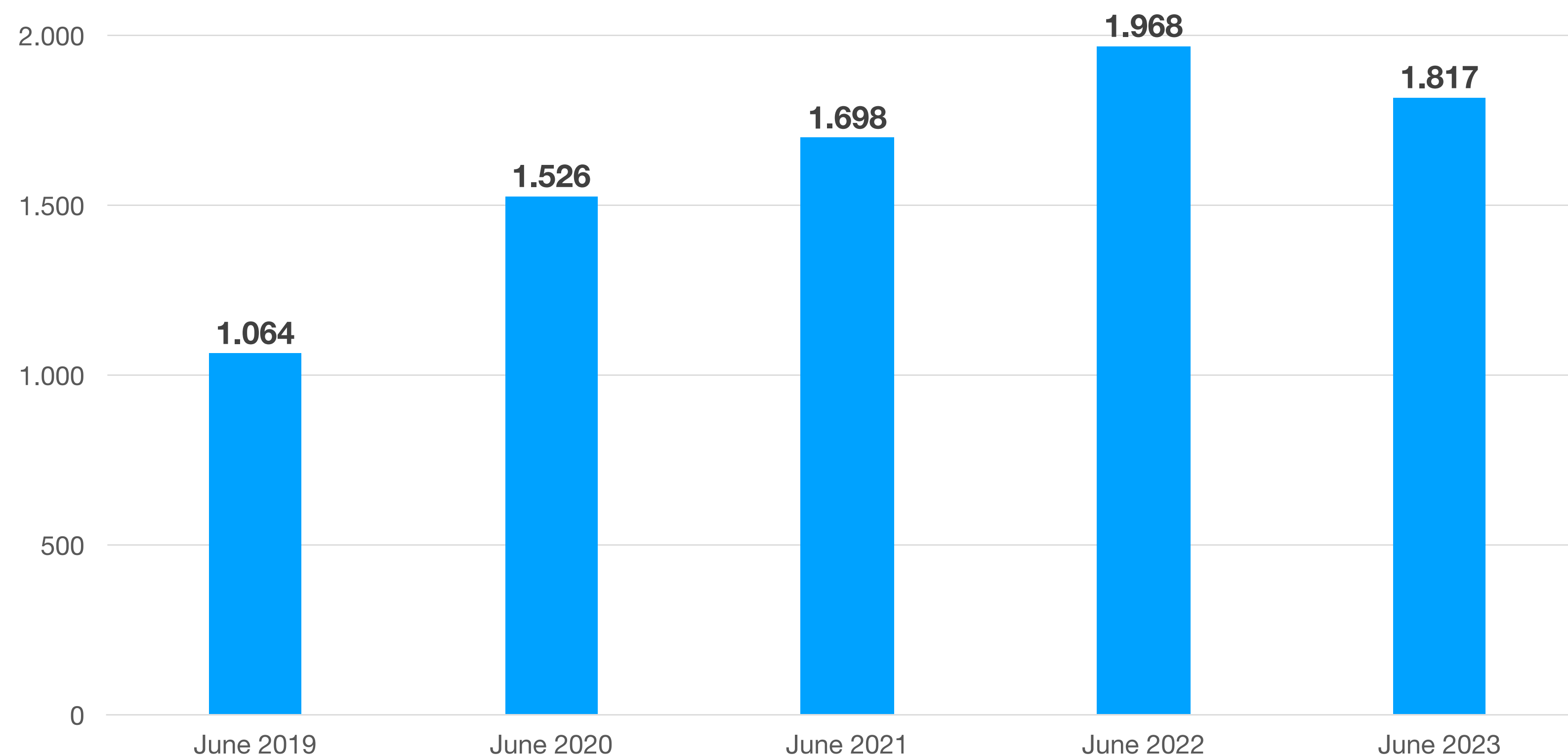
The so-called PRO circuits are complex contracting circuits in which several variables must be analysed before the actual contracting takes place.

Traffic on PRO circuits in 2Q2023 compared to 2Q2022 was practically equivalent, led by the contracting of insurance in Europe, the contracting of credit cards by Spanish entities, as well as RGPD compliance. New circuits tend to move to the standard due to the implementation of new features.



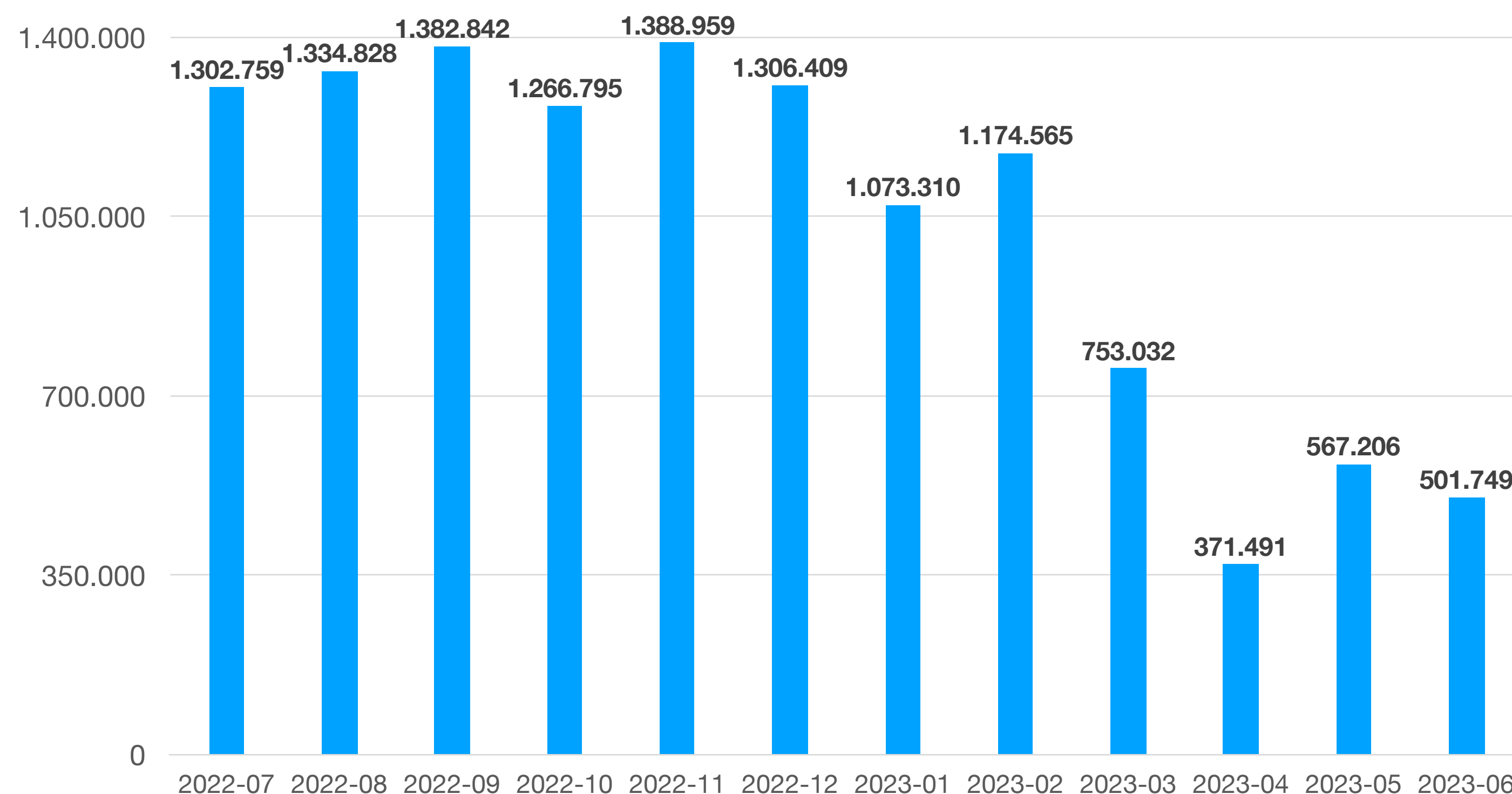
# REGISTERED ELECTRONIC EMAIL

# SINGLE REGISTERED EMAIL USERS



Unique registered email users fall by 7.7% from June 2022 to June 2023 due to the suspension of service due to non-payment to 4-72, Colombia's postal service, with two new postal operators in trials to replace it. The number of total users falls but low traffic users are on the rise.

# MONTHLY REGISTERED E-MAIL PRODUCTION



The traffic comes mainly from notifications from government agencies in Latin America and has disappeared due to non-payment by the client, producing a significant drop in service traffic, with a minimum in April and beginning to recover due to billings from audiovisual services in Latin America, notifications from infrastructure services, as well as complaints from utilities.

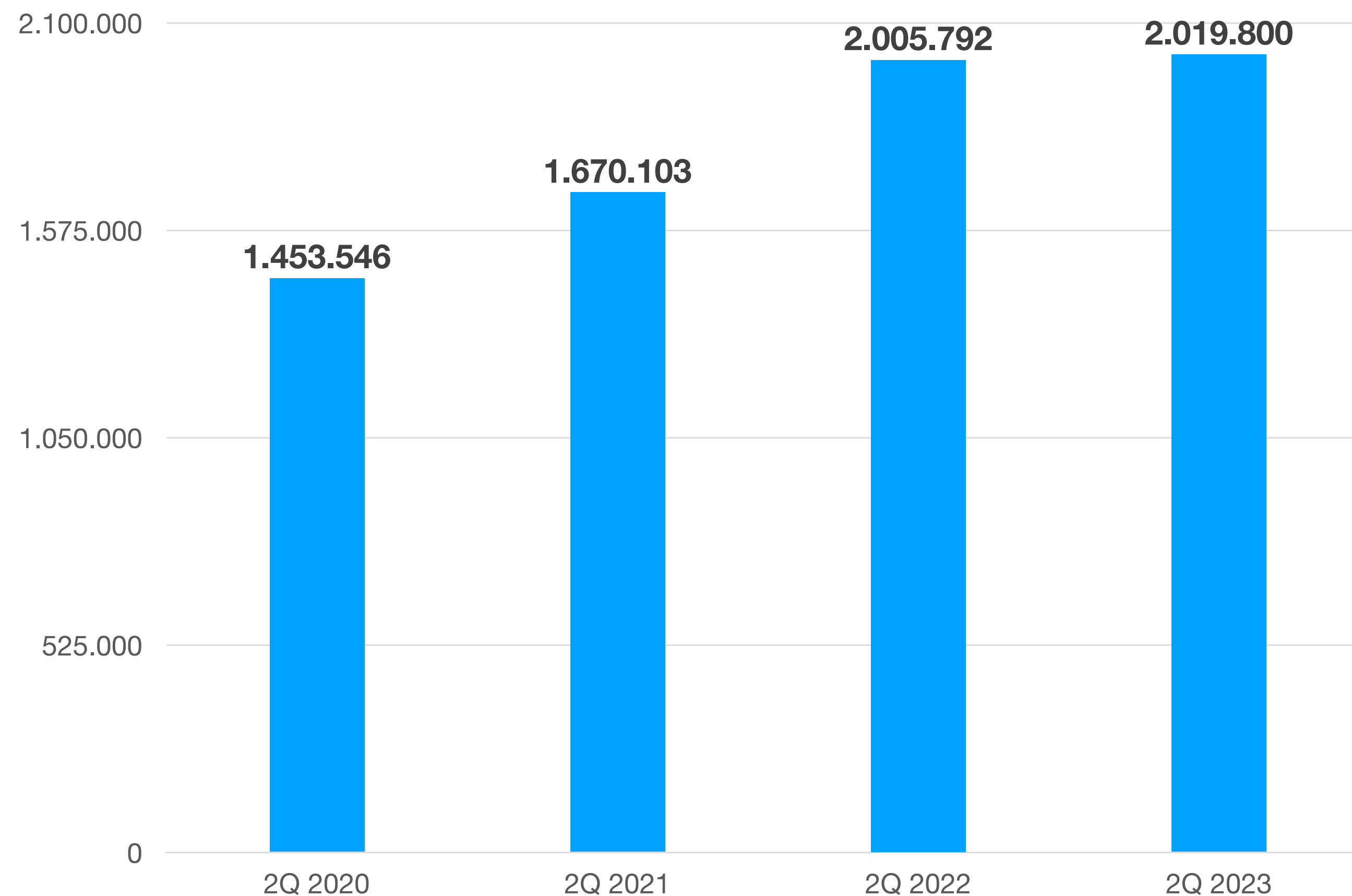
At the end of May we reached the milestone of 100 million registered e-mails produced.



# SMS SERVICES



## QUARTERLY REGISTERED SMS PRODUCTION



Registered SMS traffic in 2Q2023 grew slightly compared to the traffic generated in 2Q2022.

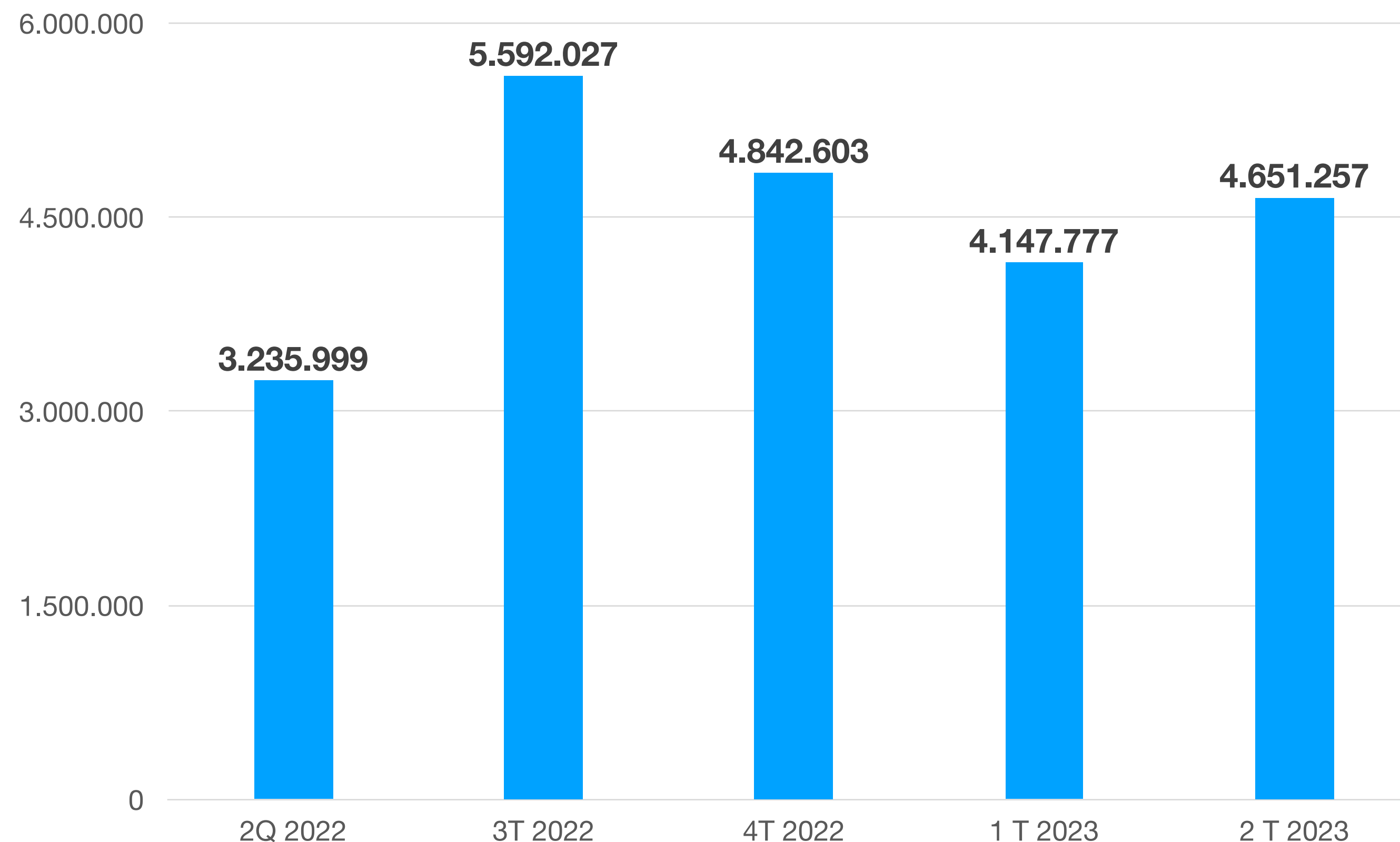
Most of the traffic comes from the use of registered SMS in the claims processes of insurance companies and utilities in Europe, debit balances in banks, financial defaults by utilities and notifications by administrations.



# OTHER SERVICES



# PRODUCTION LLEIDANET PKI- TIME STAMPS



The time stamp service is used to finalise documents or to ensure the date and time of a specific document.

The increase of the time stamp service from 2Q2020 to 2Q 2023 was 42.7%, in which the diversification of countries has increased. We currently produce them for Eidas (Europe), Dominican Republic, Peru and Colombia.



# Lleida.net

The First Registering Operator

OTCQX: **LLEIF** · EPA: **ALLN** · BME: **LLN**

[ir@lleida.net](mailto:ir@lleida.net)

[investors.lleida.net](http://investors.lleida.net)